

Flowable Composites: Where They Fit in Your Dental Workflow

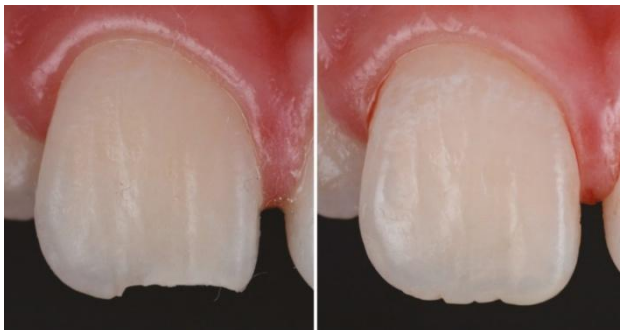
1. 💡 Why Flowable Composites Matter! 💡

Flowable composites not only enhance aesthetics but also improve the durability of restorations. With advancements in design and application techniques, dental professionals can ensure excellent results for their patients! 🌟 #DentalInnovation #FlowableComposites #Solventum

2. 🦷 Elevate Your Practice with Flowable Composites! 🦷

Our newest blog post dives into the benefits and innovations of flowable composites in restorative dentistry. Don't miss out on expert insights that can transform your patient care! Check it out now: [link to blog] #Dentistry #Innovation #PatientCare

1. Flowable Composites
2. Restorative Dentistry
3. Dental Materials
4. Resin-Based Composites
5. Dental Restoration Techniques



Discover the Advantages of Flowable Composites!

3M Health Care is now Solventum

Case Courtesy by Dr Walter Devoto

Solventum

Image of tooth restoration with flowable composite

Discover how flowable composites enhance restorative dentistry, offering innovative solutions for effective patient care and improved clinical outcomes.

Provided by Solventum

3M Health Care is now Solventum

In restorative dental care, practitioners encounter numerous variables that significantly impact treatment decisions. Factors such as the type of restoration required, the patient's oral health history, and their oral hygiene practices all play a critical role. Additionally, dental professionals must balance the need for durability with aesthetic considerations, adapting to each distinct situation.

Flowable composites have emerged as a top choice for many clinical indications. These innovative materials differentiate themselves from conventional restoratives through their unique properties, enabling dental professionals to effectively tackle challenges like decay or fracture. It is essential to understand how flowable composites are designed to offer alternative approaches to restorative care and to recognize the modern advancements that have improved their application.

The Unique Form of Flowable Composites

Flowable resin-based composites are distinguished by their reduced filler load and the use of less viscous monomers¹. They can be employed alongside conventional composites, but many contemporary options achieve results comparable to traditional materials. This means that, where applicable, flowable composites can be utilized for the entire restoration without any compromise in quality.

Typically, the filler load in restorative composites ranges from 37% to 53%¹. [LK1.1]It's important to note that the difference in inorganic filler primarily lies in quantity, with an increase in dilutant monomer. The size of the filler particles generally remains consistent across different products. However, it's essential to point out that not all flowable composites are identical; each product may contain unique inorganic fillers, with variations in type, size, and geometry². These differences impact the clinical properties of the material, offering clinicians the flexibility to choose specific flowable composites based on their treatment goals or personal preferences.

One measurable outcome related to the choice of flowable composites is compressive strength, which refers to the durability of a filling over time. This strength often correlates with the amount of inorganic filler present; however, variations in filler type, size, and geometry can also influence performance.

Avoiding Voids: The Role of Clinical Skill

The success of a dental restoration hinges not only on the materials used but also on the clinician's skill. One potential complication that can arise is the creation of voids—air pockets trapped within the composite material. These voids can occur due to

insufficient application techniques, resulting in uneven material distribution or the entrapment of air within the composite itself³.

While minor voids may not pose significant issues for the patient, they can lead to unsatisfactory visual results in radiographic exams³. More serious voids, however, can jeopardize the integrity of the restoration. If they are large enough, voids can cause cracks to form under stress, diminishing the durability and performance of the restoration⁴. Defects at restorative margins can also lead to microleakage and discoloration, both of which are significant concerns that may necessitate more invasive retreatments.

Embracing Modern Advancements

Modern flowable composites have been engineered to optimize application and reduce the incidence of void creation in several ways, particularly through improvements in syringe design. Dental professionals should seek flowable composites that enhance ease of access to restorative sites, minimizing the potential for errors during application. Additionally, innovative syringe designs allow air to escape rather than becoming trapped within the composite.

A prime example of this is the 3M™ Filtek™ Supreme Flowable Restorative (add link to website PDP) from Solventum, previously known as 3M Health Care. This product features an upgraded syringe and a new tip design that effectively eliminates trapped air. The design allows air to escape through venting on the plunger, resulting in virtually no bubbles. The 3M™ Filtek™ Supreme Flowable Restorative (add link to website PDP) excels in adapting to the oral cavity, offering exceptional polish retention and wear resistance, along with natural-looking results that ensure your patients can smile confidently for years to come.

The Importance of Material and Skill

Flowable resin-based composites can be an effective solution for dental professionals; however, success is contingent upon the properties of both the material and the syringe, as well as the clinician's expertise. Investing time in selecting the right approach that optimizes both material and skill is essential for achieving long-lasting restorations.

Composite Research Award: 3M™ Filtek™ Supreme Flowable Restorative

3M™ Filtek™ Supreme Flowable Restorative delivers strength and aesthetics in an easy-to-use formula in a new ergonomic syringe virtually eliminating bubbles.

Why it won:

- Provides **excellent wear resistance** for long-term restorations.
- Low shrinkage for **minimal stress on tooth structure**.
- Smooth flow for **precise placement** in small or deep cavities.

What evaluators said:

“Great handling and a fantastic polish – it stays looking good for years.”

“The flowability is perfect for difficult areas, and it holds up well over time.”



Product picture of Filtek Supreme Flowable dental composite

1 Vouvoudi, E. C. (2022). Overviews on the progress of flowable dental polymeric composites: their composition, polymerization process, flowability and radiopacity aspects. *Polymers*, 14(19), 4182.

2 Mirică, I. C., Furtos, G., Bâldea, B., Lucaciu, O., Ilea, A., Moldovan, M., & Câmpian, R. S. (2020). Influence of filler loading on the mechanical properties of flowable resin composites. *Materials*, 13(6), 1477.

3 Körner, P., Gerber, S. C., Gantner, C., Hamza, B., Wegehaupt, F. J., Attin, T., & Deari, S. (2023). A laboratory pilot study on voids in flowable bulk-fill composite restorations in bovine Class-II and endodontic access cavities after sonic vibration. *Scientific Reports*, 13(1), 18557.

4 Nazari, A., Sadr, A., Saghiri, M. A., Campillo-Funollet, M., Hamba, H., Shimada, Y., ... & Sumi, Y. (2013). Non-destructive characterization of voids in six flowable composites using swept-source optical coherence tomography. *Dental Materials*, 29(3), 278-286.

Article published by a Solventum Certified Distributor



